

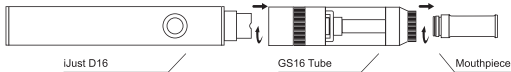
iJust D16 Kit User Manual

Notice for Use

Thank you for choosing Eleaf products! Please read this manual carefully before use so as to use correctly. If you require additional information or have questions about the product or its use, please consult your local OVALE agent.

Product Introduction

iJust D16 Kit features the adjustable voltage from 3.3V to 5V and the maximum output 10 watts which can offer you a strong vaping experience. A variety of advanced features we can find: elegant appearance with smooth touch; 1700mAh/850mAh battery capacity, tail LED digital screen which can show you current voltage, total puffs, vaping seconds. Now, just begin to enjoy your modern and digital vaping life with iJust D16 Kit.



How to use

Power on and off: Press the button for 5 times in quick succession, the button light will flash 5 times to indicate iJust D16 is ready for use. The tail LED digital screen will show the current power. In the same way, iJust D16 will be powered off after 5 presses.

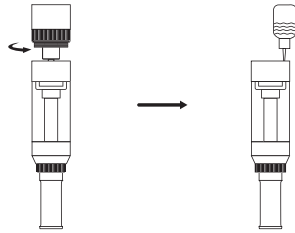
Vape: Long press the button while inhaling the mouthpiece lightly to get a puff. The tail LED digital screen will show the increasing vaping seconds. When you loosen the button, the total vaping seconds will be displayed for 0.5 seconds. After that, the tail LED digital screen will show the current power for 3 seconds.

VV mode (3.3V-5V): In this mode, voltage output can be adjusted by rotating the regulation ring clockwise or counterclockwise. The tail LED digital screen will show the current voltage during adjusting.

Charging: Plug the USB cable to the iJust D16, and connect it to the wall adaptor or other power source such as a computer, (it can be used whilst on charge) (During charging, the "% symbol on the bottom of battery will keep flashing and stop flashing when fully charged)

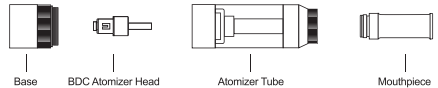
E-liquid filling :

Unscrew iJust D16 atomizer base out of atomizer. Refill e-liquid into the atomizer through the small holes. Screw atomizer base onto atomizer. (NOTE: Please do not overfill. Leave a small air pocket in order to avoid leakage.)



BDC atomizer head Replacement:

Screw the base off connector firstly. Pull out the BDC atomizer head from the base and replace a new one.



Properties

Over-current Protection: When over-current protection occurs, the vaping seconds on the LED digital screen will stop increasing. Two seconds later, the LED digital screen will show the current voltage for five seconds. At the same time, the button light will flash five times.

Short-circuit Protection: When short-circuit occurs, the battery will shut off automatically.

Low-voltage Protection: When the voltage of battery is below 3.3V, the button light will flash 40 times. At the same time, the LED digital screen will go out.

Unlock the Low-voltage Protection: When the voltage of battery is above 3.65V, the low-voltage protection will be unlocked.

Precautions

- Only have your iJust D16 Kit repaired by Eleaf. Do not attempt to repair the unit by yourself as damage or personal injury may occur.
- Do not leave the iJust D16 Kit in high temperatures or damp conditions, otherwise it may be damaged. The appropriate operation temperature is within 0°C to 45°C while charging and -10°C to 60°C while using.
- Do not attempt to combine the iJust D16 Kit with parts from other brands of e-cigarettes. If it is damaged in this way, our company will not take on responsibility and your warranty will be void.

Warranty

We are not responsible for any damages caused by human error. Our warranty is not available for products purchased from third-party vendors.

경고 : 19세 미만 청소년에게 판매할 수 없습니다.

Shenzhen iSmoka Electronics Co., Ltd.

